



5.11-5.61

Base Plate

Base Plate

Leveling Foot

Mounting Plate

Castor Plate

Castor

Base Angle

L Base

Foot and Castor
Components

Leveling Castor

5

Floor Elements



P. 5-02



P. 5-03



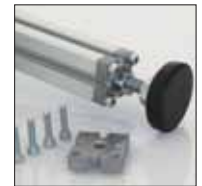
P. 5-04



P. 5-07



P. 5-08



P. 5-10



P. 5-11



P. 5-14



P. 5-15



P. 5-16



P. 5-17



P. 5-18

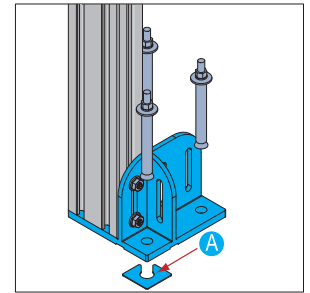
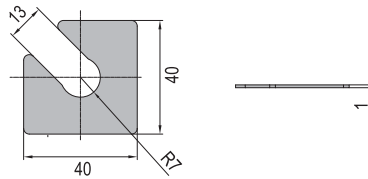
Floor Elements

Base Plate

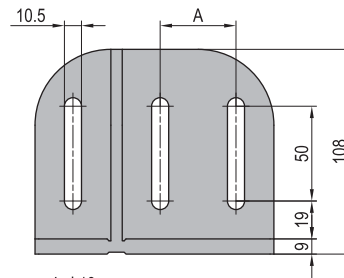
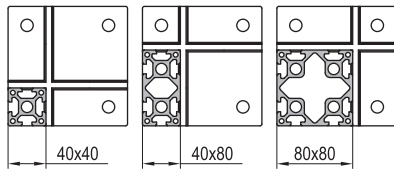
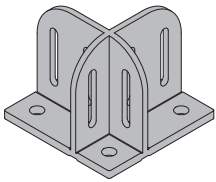
To support strut profile at the bottom. Expansion bolts chocked into floor can offer a high stability.

Material and surface treatment: cast steel, anti-corrosive

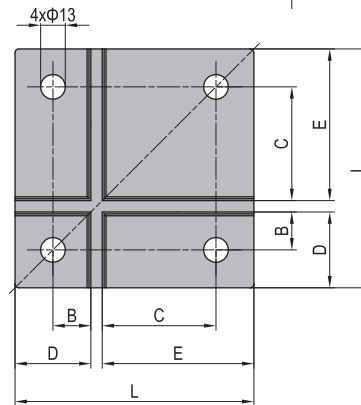
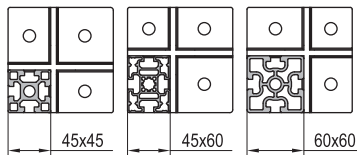
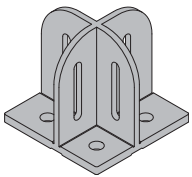
- A** Base Plate Gasket
 To adjust the degree of vertical profile and uneven ground.



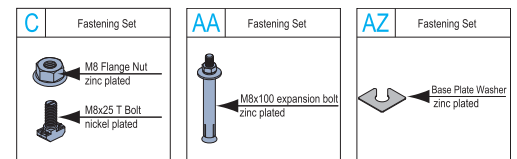
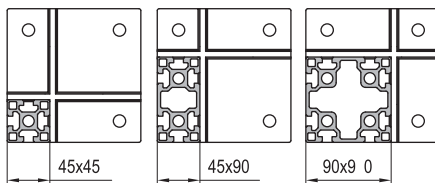
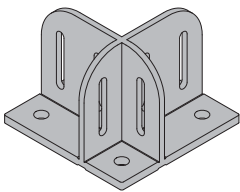
Base Plate-4080



Base Plate-4560



Base Plate-4590



Description	L (mm)	A (mm)	B (mm)	C (mm)	D (mm)	E (mm)	Fastening Set	Mass (g)	Part No.
Base Plate-4080 (pc)	126	40	20	60	40	80	2xAZ	1930	5.11.4080
Base Plate-4080 (set A)							4xC+3xAA+2xAZ	2240	5.11.4080.STA
Base Plate-4080 (set B)							6xC+3xAA+2xAZ	2290	5.11.4080.STB
Base Plate-4080 (set C)							8xC+3xAA+2xAZ	2340	5.11.4080.STC
Base Plate-4560 (pc)	111		22.5	30	45	60	2xAZ	1600	5.11.4560
Base Plate-4560 (set)							4xC+3xAA+2xAZ	1910	5.11.4560.ST
Base Plate-4590 (pc)	141	45	22.5	67.5	45	90	2xAZ	2330	5.11.4590
Base Plate-4590 (set A)							4xC+3xAA+2xAZ	2640	5.11.4590.STA
Base Plate-4590 (set B)							6xC+3xAA+2xAZ	2690	5.11.4590.STB
Base Plate-4590 (set C)							8xC+3xAA+2xAZ	2740	5.11.4590.STC
Base Plate Gasket A								9	5.11.01



Floor Elements

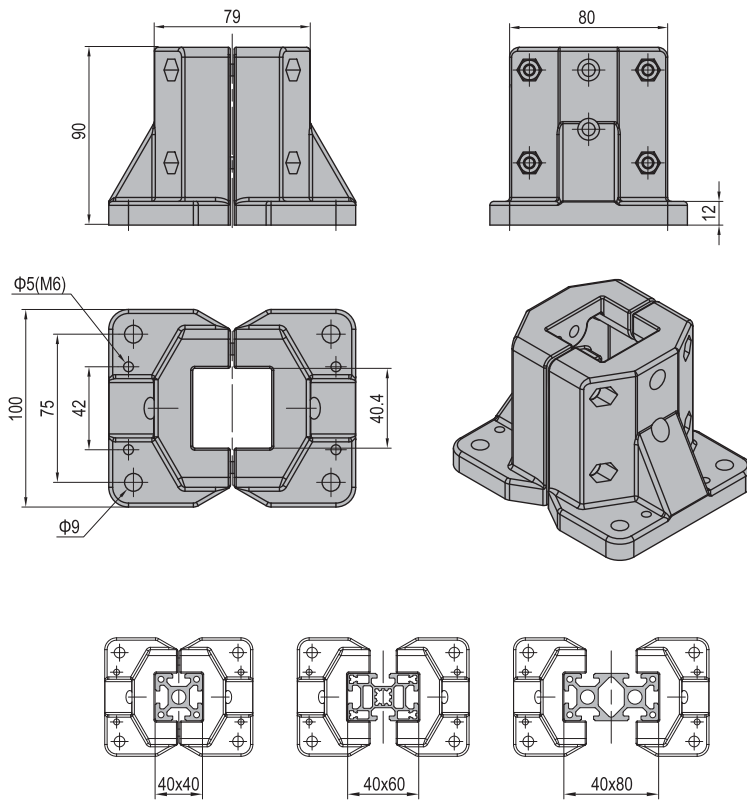
Base Plate

To support strut profile mounted on the floor or between the platforms. Expansion bolts chocked into the floor can offer a high stability.

Material and Color: aluminum, spray coating, silver



Base Plate-4080



Description	Fastening Set	Mass (g)	Part No.
Base Plate-4080 (set)	4xDT	975	5.12.40.ST

DT	Fastening Set
	M6x20 Bolt zinc plated
	M6 Spring Washer zinc plated
	M6 Pre-set Nut nickel plated



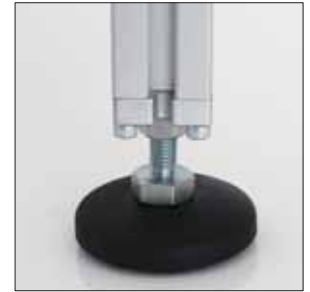
Floor Elements

Leveling Foot-Pivot Foot

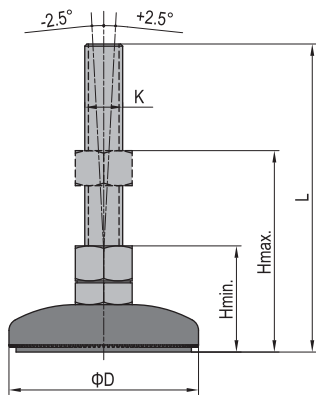


To support structure where gradual height adjustment is needed, the pivot foot has a small swiveling angle to fit slightly uneven floor. The connection between the pivot base and the spindle can be released with a tool.

Material and Color: Base-black PA6 Spindle-zinc plated steel Pad-black rubber



Pivot Foot



Description	D (mm)	KxL (mm)	H min. (mm)	H max. (mm)	Max. Static Load (N)	Mass (g)	Part No.
Pivot Foot-PA 6 Base	59	M12x90	45	70	4500	152	5.21.60.12.90
		M14x130		100	7000	220	5.21.60.14.130 <i>New!</i>
	79	M12x90	45	70	9000	188	5.21.80.12.90
		M12x130		100		218	5.21.80.12.130
		M16x130		100		328	5.21.80.16.130
	99	M12x130	45	100	10000	326	5.21.100.12.130
M16x130		100		436		5.21.100.16.130	

Leveling Foot-Swivel Foot

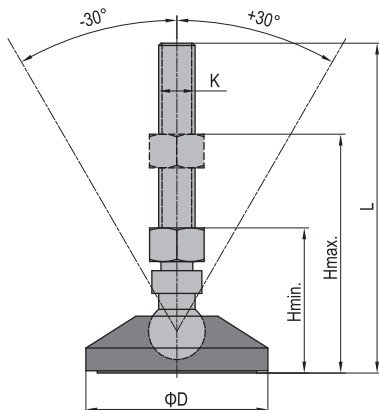


To support structure where gradual height adjustment is needed, the swivel foot has a ball joint between the base and spindle, thus allowing the foot to swivel to an angle up to 30°. It is suitable to be used on the components moved frequently.

Material and Color: Base-black PA6 Spindle-zinc plated steel Pad-black rubber



Swivel Foot



Description	D (mm)	KxL (mm)	H min. (mm)	H max. (mm)	Max. Static Load (N)	Mass (g)	Part No.
Swivel Foot-PA 6 Base	59	M12x90	45	70	4500	162	5.22.60.12.90
		M12x90		70	9000	198	5.22.80.12.90
	M12x130	100	228	5.22.80.12.130			
	M16x130	100	338	5.22.80.16.130			
	99	M12x130	45	100	10000	336	5.22.100.12.130
		M16x130		100		446	5.22.100.16.130

Floor Elements

Leveling Foot-Fixed Foot

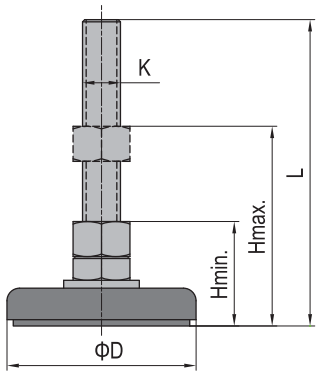


Fixed foot have a non-moving connection between base and spindle.

Material and Color: Base Plate-steel, electrophoresis, black Spindle-zinc plated steel Pad-black rubber



Fixed Foot



Description	D (mm)	KxL (mm)	H min. (mm)	H max. (mm)	Max. Static Load (N)	Mass (g)	Part No.
Fixed Foot-Steel Base	40	M12x70	35	50	4000	124	5.23.40.12.70
	60	M12x70	35	50	7000	181	5.23.60.12.70
		M14x70	38	50		225	5.23.60.14.70
	80	M12x70	35	50	9000	220	5.23.80.12.70
		M12x110	35	80		240	5.23.80.12.110
		M14x70	38	50		283	5.23.80.14.70

Ad:M14 Fixed Foot should use an end cap with a punched hole



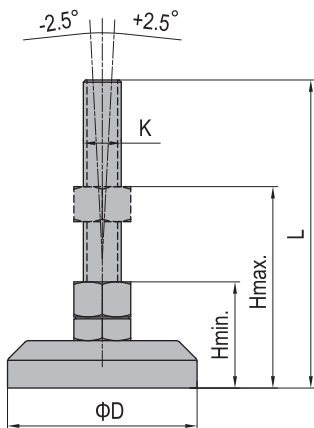
Leveling Foot-Pivot Foot



To support structure where gradual height adjustment is needed, the pivot foot has a small swiveling angle to fit slightly uneven floor. The connection between the pivot base and the spindle can be released with a tool.

Material: zinc plated steel/stainless steel

Pivot Foot



Description	D (mm)	KxL (mm)	H min. (mm)	H max. (mm)	Max. Static Load (N)	Mass (g)	Part No.
Pivot Foot-Zinc Plate Steel	40	M12x128	45	100	15000	241	5.24.40.12.130
		M14x128	45	100	17000	290	5.24.40.14.130 New!
	60	M12x128	45	100	15000	475	5.24.60.12.130
		M14x128	45	100	17000	523	5.24.60.14.130 New!
		M16x158	45	120	20000	596	5.24.60.16.160
	80	M20x178	50	130	25000	796	5.24.60.20.180
		M12x128	45	100	15000	670	5.24.80.12.130
		M16x158	45	120	20000	780	5.24.80.16.160
	Pivot Foot-Stainless Steel	40	M20x178	50	130	25000	945
M12x128			45	100	15000	240	5.24.40.12.130.SS
M14x128			45	100	17000	290	5.24.40.14.130.SS
60		M12x128	45	100	15000	480	5.24.60.12.130.SS
		M16x158	45	120	20000	600	5.24.60.16.160.SS
M20x178		50	130	25000	803	5.24.60.20.180.SS	
80	M12x128	45	100	15000	675	5.24.80.12.130.SS	
	M16x158	45	120	20000	785	5.24.80.16.160.SS	
	M20x178	50	130	25000	950	5.24.80.20.180.SS	

Floor Elements

Cup pivot foot

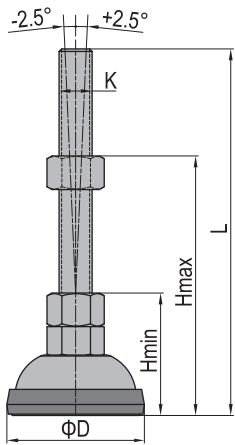
New!

To support structure where gradual height adjustment is needed, the pivot foot has a small swiveling angle to fit slightly uneven floor. The connection between the pivot base and the spindle can be released with a tool.

Material: zinc plated steel



Cup pivot foot



Description	D (mm)	KxL (mm)	H min. (mm)	H max. (mm)	Max. Static Load (N)	Mass (g)	Part No.
Cup pivot foot	45	M12x132	50	105	10000	148	5.25.40.12.130
	50					207	5.25.45.12.130

Modular Assembly System

MAS

Machine Guard System

MGS

Stair and Platform System

SPS

Tubular Framing System

TFS



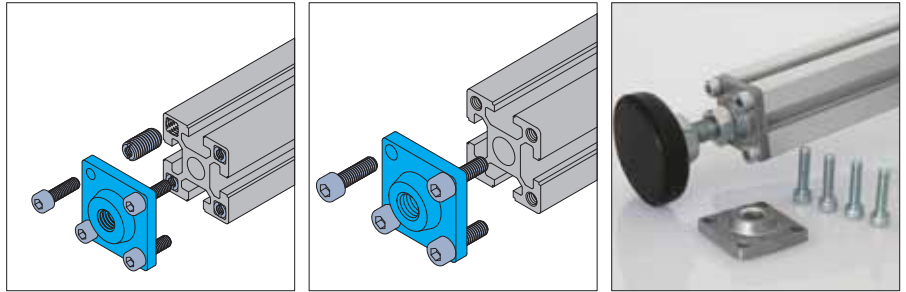
Floor Elements

Mounting Plate



To attach leveling foot to strut profile end, but it does not apply for connecting of castors.

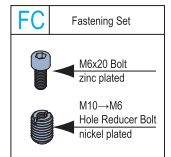
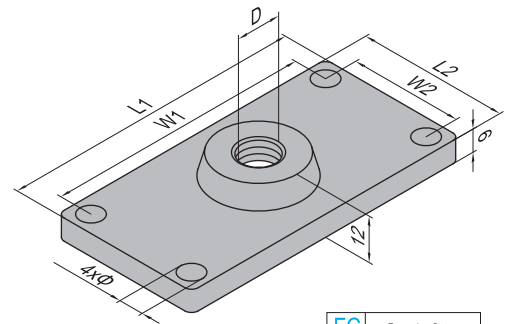
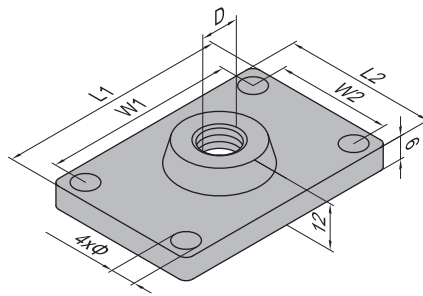
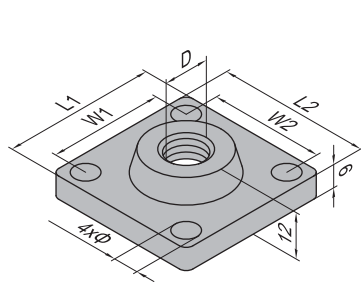
Material: diecast aluminum



PG40-40x40
 PG45-45x45
 PG50-50x50

PG40-40x60
 PG45-45x60

PG40-40x80
 PG45-45x90



Description	D	Φ	L1 (mm)	L2 (mm)	W1 (mm)	W2 (mm)	Fastening Set	Mass (g)	Part No.
Mounting Plate-PG40-4040	M12	6.5	40	40	30	30	4x(M6x20)	51	5.31.40.4040
Mounting Plate-PG45-4545	M12	6.5	45	45	33	33	4xFC	97	5.31.45.4545
Mounting Plate-PG50-5050	M12	8.5	50	50	35	35	4x(M8x30)	130	5.31.50.5050
Mounting Plate-PG40-4060	M12	6.5	60	40	50	30	4x(M6x20)	67	5.31.40.4060
Mounting Plate-PG45-4560	M12	6.5	60	45	48	33	4xFC	108	5.31.45.4560
Mounting Plate-PG40-4080	M12	6.5	80	40	70	30	4x(M6x20)	78	5.31.40.4080.M12
	M16						4x(M6x20)	78	5.31.40.4080.M16
Mounting Plate-PG45-4590	M12	6.5	90	45	78	33	4xFC	131	5.31.45.4590.M12
	M16						4xFC	128	5.31.45.4590.M16



Floor Elements

Mounting Plate



To attach leveling foot or castor to strut profile end.

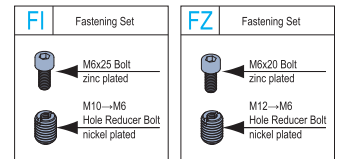
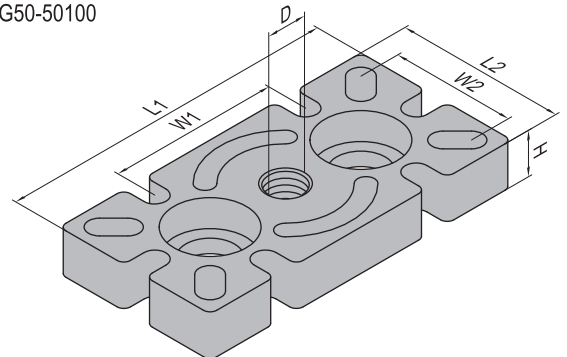
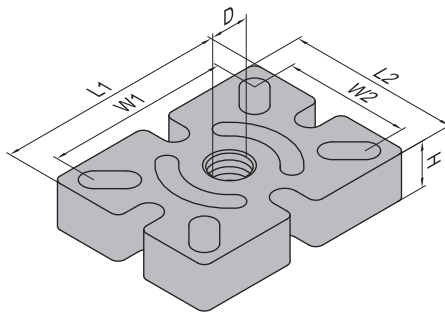
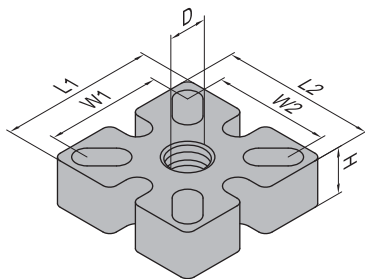
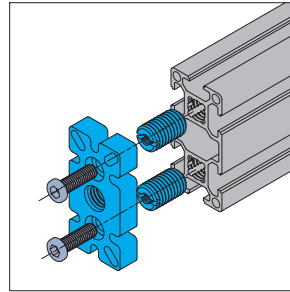
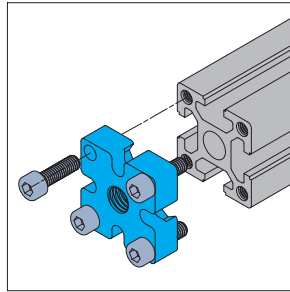
Material and Color: spray coating steel, silver



PG40-4040
PG45-4545
PG50-5050

PG40-4060
PG45-4560

PG30-3060
PG40-4080
PG45-4590
PG50-50100



Description	D	L1 (mm)	L2 (mm)	W1 (mm)	W2 (mm)	H (mm)	Fastening Set	Mass (g)	Part No.
Mounting Plate-PG40-4040	M12	40	40	30	30	12	4x(M6x20)	128	5.32.40.4040
Mounting Plate-PG45-4545	M12	45	45	33	33	12	4xFI	203	5.32.45.4545
Mounting Plate-PG50-5050	M12	50	50	35	35	12	4x(M8x20)	218	5.32.50.5050
Mounting Plate-PG40-4060	M12	60	40	50	30	12	4x(M6x20)	176	5.32.40.4060
Mounting Plate-PG45-4560	M12	60	45	48	33	12	4xFI	220	5.32.45.4560
Mounting Plate-PG30-3060	M12	60	30	30	23	10	2xFZ	133	5.32.30.3060
Mounting Plate-PG40-4080	M12	80	40	40	30	12	2x(M14x25)	272	5.32.40.4080.M12
	M16							270	5.32.40.4080.M16
Mounting Plate-PG45-4590	M12	90	45	45	33	12	2x(M14x25)	332	5.32.45.4590.M12
	M16							330	5.32.45.4590.M16
Mounting Plate-PG50-50100	M12	100	50	50	35	12	2x(M14x25)	332	5.32.50.50100.M12
	M16							329	5.32.50.50100.M16
	M20							327	5.32.50.50100.M20

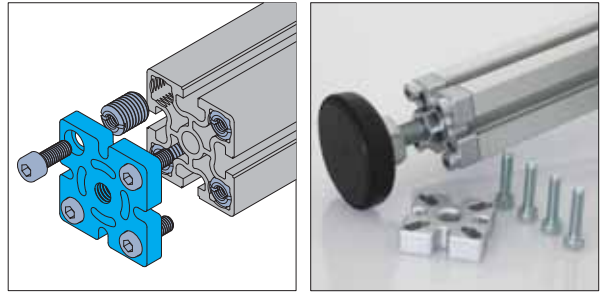


Floor Elements

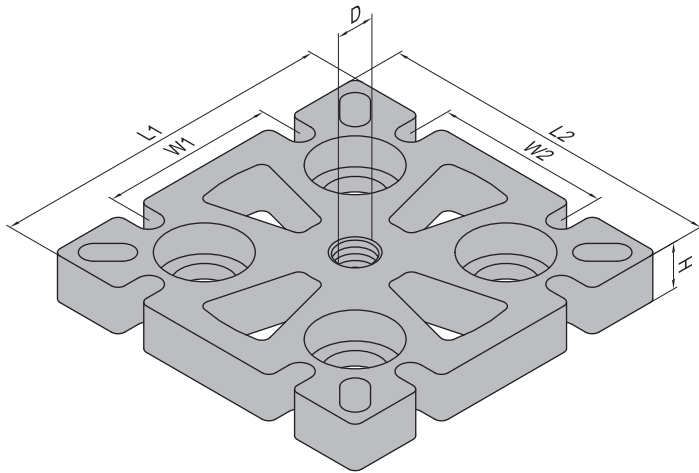


To attach leveling foot or castor to strut profile end.

Material: spray coating steel, sliver



Reliability	★★★★★
Efficiency	★★★★★
Cost	★★★



FY	Fastening Set	FZ	Fastening Set
	M8x20 Bolt zinc plated		M6x20 Bolt zinc plated
	M16→M8 Hole Reducer Bolt nickel plated		M12→M6 Hole Reducer Bolt nickel plated

Description	D	L1 (mm)	L2 (mm)	W1 (mm)	W2 (mm)	H (mm)	Fastening Set	Mass (g)	Part No.
Mounting Plate-PG30-6060	M12	60	60	30	30	10	4xFZ	232	5.32.30.6060.M12
	M16							230	5.32.30.6060.M16
Mounting Plate-PG40-8080	M12	80	80	40	40	12	4x(M14x25)	534	5.32.40.8080.M12
	M16							532	5.32.40.8080.M16
	M20							530	5.32.40.8080.M20
Mounting Plate-PG45-9090	M12	90	90	45	45	12	4x(M14x25)	664	5.32.45.9090.M12
	M16							661	5.32.45.9090.M16
	M20							659	5.32.45.9090.M20
Mounting Plate-PG50-100100	M12	100	100	50	50	12	4x(M14x25)	725	5.32.50.100100.M12
	M16							722	5.32.50.100100.M16
	M20							720	5.32.50.100100.M20
Mounting Plate-PG60-6060	M12	60	60	40	40	12	4xFY	330	5.32.60.6060



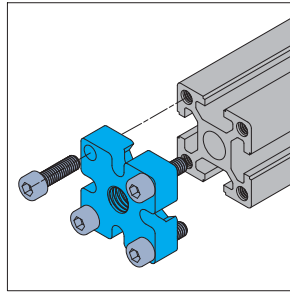
Floor Elements

Mounting Plate



To attach leveling foot or castor to strut profile end.

Material and Color: diecast zinc, silver

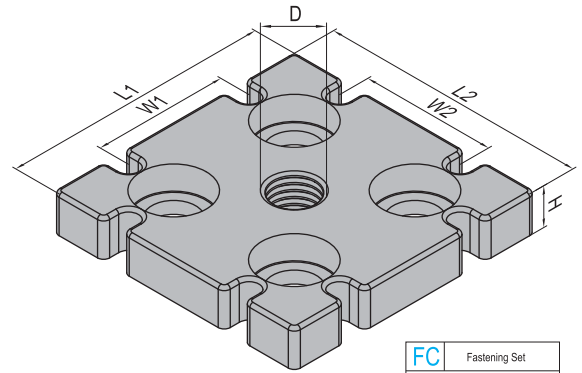
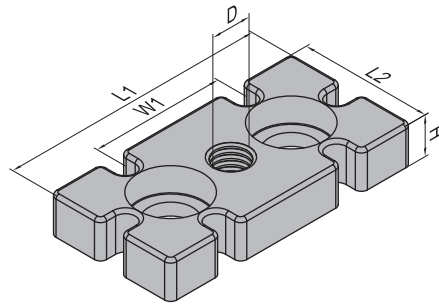
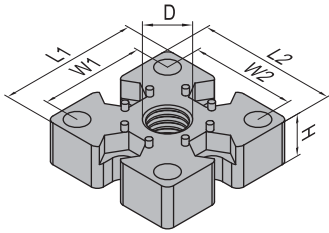


Reliability	★★★★
Efficiency	★★★★★
Cost	★★★★

PG40-4040
PG45-4545

PG40-4080
PG45-4590

PG40-8080
PG45-9090



FC	Fastening Set
	M6x20 Bolt zinc plated
	M10-M6 Hole Reducer Bolt nickel plated

Description	D	L1 (mm)	L2 (mm)	W1 (mm)	W2 (mm)	H (mm)	Fastening Set	Mass (g)	Part No.
Mounting Plate-PG40-4040	M12	40	40	30	30	12	4x(M6x20)	117	5.33.40.4040
Mounting Plate-PG45-4545	M12	45	45	33	33	12	4xFC	189	5.33.45.4545
Mounting Plate-PG40-4080	M12	80	40	40		12	2x(M14x25)	277	5.33.40.4080.M12
	M16							275	5.33.40.4080.M16
Mounting Plate-PG45-4590	M12	90	45	45		12	2x(M14x25)	344	5.33.45.4590.M12
	M16							342	5.33.45.4590.M16
Mounting Plate-PG40-8080	M12	80	80	40	40	12	4x(M14x25)	582	5.33.40.8080.M12
	M16							580	5.33.40.8080.M16
	M20							577	5.33.40.8080.M20
Mounting Plate-PG45-9090	M12	90	90	45	45	12	4x(M14x25)	714	5.33.45.9090.M12
	M16							712	5.33.45.9090.M16
	M20							709	5.33.45.9090.M20



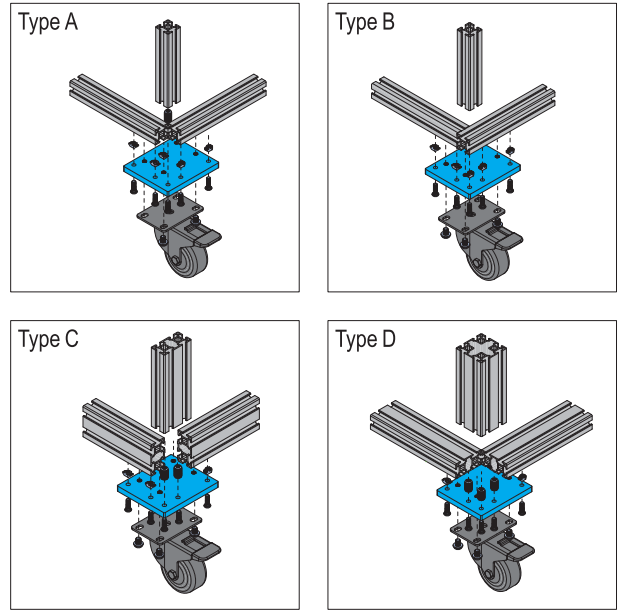
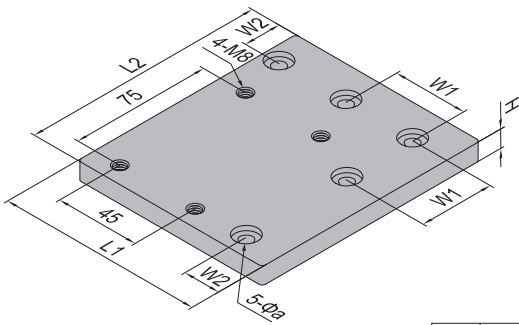
Floor Elements


















Castor Plate



The castor plate is used for attaching profiles to the castor with plate.

Material: zinc plated steel



GJ	Fastening Set	GK	Fastening Set	GL	Fastening Set	GM	Fastening Set	AM	Fastening Set	GN	Fastening Set
	M8x20 Bolt zinc plated		M8x25 Bolt zinc plated		M6x20 Bolt zinc plated		M6x20 Bolt zinc plated		M8x12 Bolt zinc plated		M8x25 Bolt zinc plated
	M8 Spring Washer zinc plated		M8 Spring Washer zinc plated		M6 Spring Washer zinc plated		M6 Spring Washer zinc plated		M8 Washer zinc plated		M8 Spring Washer zinc plated
	M8 T Nut nickel plated		M8 T Nut nickel plated		M6 T Nut nickel plated		M12-M6 Hole Reducer Bolt nickel plated				M14-M8 Hole Reducer Bolt nickel plated

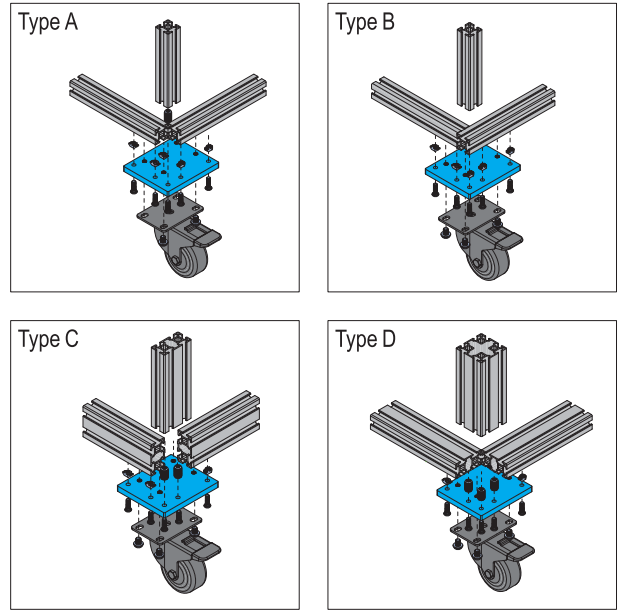
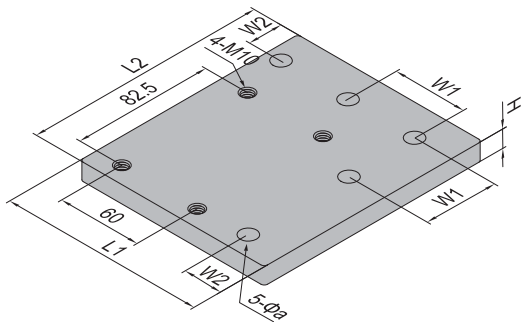
Description	PG	H (mm)	L1 (mm)	L2 (mm)	W1 (mm)	W2 (mm)	Φa (mm)	Fastening Set	Mass (g)	Part No.
Castor Plate A-PG30	PG30	10	105	120	30	15	7	4xGL+1xGM+4xAM	1056	5.34.30.STA
Castor Plate B-PG30								5xGL+4xAM	1049	5.34.30.STB
Castor Plate C-PG30								3xGL+2xGM+4xAM	1063	5.34.30.STC
Castor Plate D-PG30								2xGL+3xGM+4xAM	1070	5.34.30.STD
Castor Plate A-PG40	PG40	12	110	130	40	20	9	4xGJ+1xGN+4xAM	1229	5.34.40.STA
Castor Plate B-PG40								5xGJ+4xAM	1222	5.34.40.STB
Castor Plate C-PG40								3xGJ+2xGN+4xAM	1236	5.34.40.STC
Castor Plate D-PG40								2xGJ+3xGN+4xAM	1243	5.34.40.STD
Castor Plate A-PG45	PG45	12	120	130	45	22.5	9	4xGK+1xGN+4xAM	1237	5.34.45.STA
Castor Plate B-PG45								5xGK+4xAM	1230	5.34.45.STB
Castor Plate C-PG45								3xGK+2xGN+4xAM	1244	5.34.45.STC
Castor Plate D-PG45								2xGK+3xGN+4xAM	1251	5.34.45.STD



















Floor Elements



The castor plate is used for attaching profiles to the castor with plate-Heavy.

Material: zinc plated steel



DO	DQ	DS	DP	DR
Fastening Set  M6x20 Bolt zinc plated  M6 Spring Washer zinc plated  M6 Washer zinc plated  M6 T Nut nickel plated	Fastening Set  M8x20 Bolt zinc plated  M8 Spring Washer zinc plated  M8 Washer zinc plated  M12-M8 Hole Reducer Bolt nickel plated	Fastening Set  M10x16 Bolt zinc plated  M10 Washer zinc plated	Fastening Set  M8x25 Bolt zinc plated  M8 Spring Washer zinc plated  M8 Washer zinc plated  M8 T Nut nickel plated	Fastening Set  M8x25 Bolt zinc plated  M8 Spring Washer zinc plated  M8 Washer zinc plated  M14-M8 Hole Reducer Bolt nickel plated

Description	PG	H (mm)	L1 (mm)	L2 (mm)	W1 (mm)	W2 (mm)	Φa (mm)	Fastening Set	Mass (g)	Part No.
Castor Plate-Heavy A-PG30	PG30	10	120	135	30	15	7	4xDO+1xDQ+4xDS	1364	5.34.30.H.STA
Castor Plate-Heavy B-PG30								5xDO+4xDS	1356	5.34.30.H.STB
Castor Plate-Heavy C-PG30								3xDO+2xDQ+4xDS	1372	5.34.30.H.STC
Castor Plate-Heavy D-PG30								2xDO+3xDQ+4xDS	1380	5.34.30.H.STD
Castor Plate-Heavy A-PG40	PG40	12	125	145	40	20	9	4xDP+1xDR+4xDS	1834	5.34.40.H.STA
Castor Plate-Heavy B-PG40								5xDP+4xDS	1826	5.34.40.H.STB
Castor Plate-Heavy C-PG40								3xDP+2xDR+4xDS	1842	5.34.40.H.STC
Castor Plate-Heavy D-PG40								2xDP+3xDR+4xDS	1850	5.34.40.H.STD
Castor Plate-Heavy A-PG45	PG45	12	135	145	45	22.5	9	4xDP+1xDR+4xDS	1969	5.34.45.H.STA
Castor Plate-Heavy B-PG45								5xDP+4xDS	1972	5.34.45.H.STB
Castor Plate-Heavy C-PG45								3xDP+2xDR+4xDS	1977	5.34.45.H.STC
Castor Plate-Heavy D-PG45								2xDP+3xDR+4xDS	1985	5.34.45.H.STD



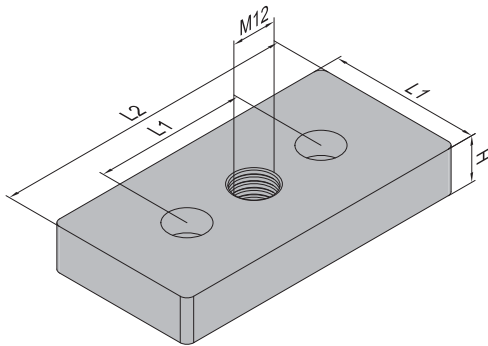
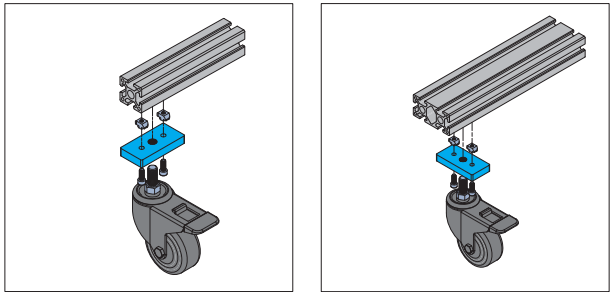
Floor Elements

Castor Plate



The castor plate is used for attaching profiles to the castor with thread.

Material: zinc plated steel



FS	Fastening Set	CQ	Fastening Set
	M6x10 Bolt zinc plated		M6x16 Bolt zinc plated
	M6 T Nut nickel plated		M6 T Nut nickel plated

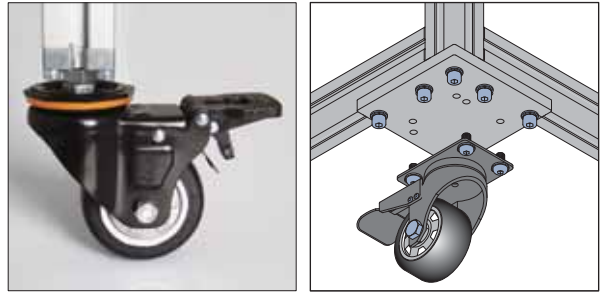
Description	PG	H (mm)	L1 (mm)	L2 (mm)	Fastening Set	Mass (g)	Part No.
Castor Plate-PG30	PG30	10	30	60	2xFS	162	5.35.30.ST
Castor Plate-PG40	PG40	12	40	80	2xCQ	296	5.35.40.ST
Castor Plate-PG45	PG45	12	45	90	2xCQ	377	5.35.45.ST

When the castor is installed with this castor plate, the profile need be machined with a $\Phi 12.5$ and 20mm depth hole at the corresponding position to the thread of the castor.

Floor Elements

Castor

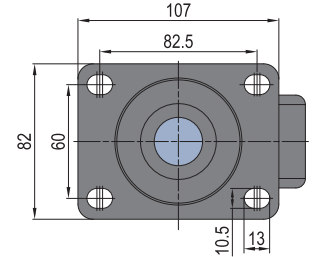
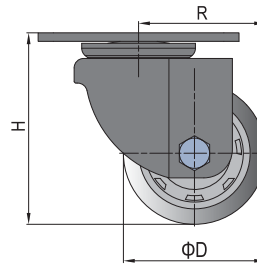
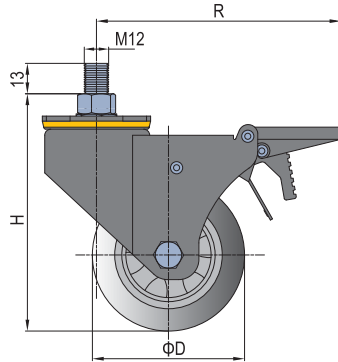
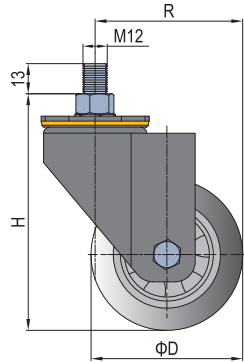
Material and Color: Base-carbon steel, plastic powder coated, black
Wheel-polyurethane(Heavy duty - Nylon)



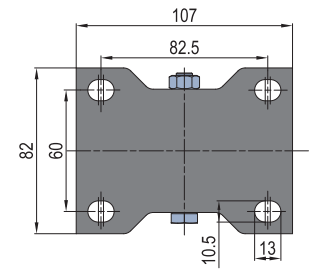
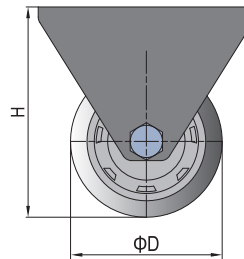
Castor-Thread-Universal

Castor-Thread-Brake-Universal

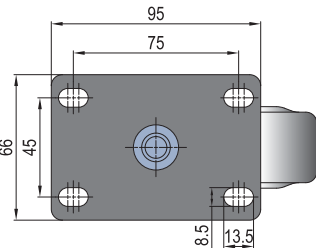
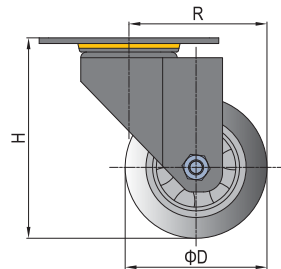
Castor-Plate-Universal-Heavy



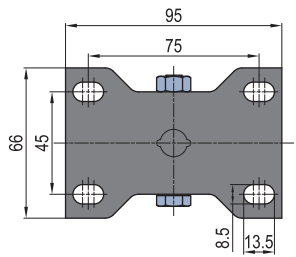
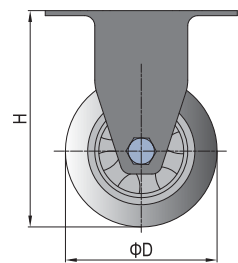
Castor-Plate-Fixed-Heavy



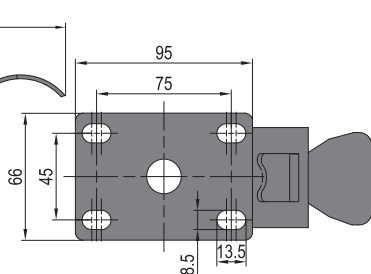
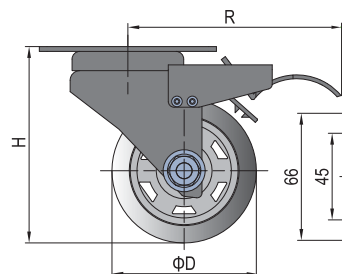
Castor-Plate-Universal



Castor-Plate-Fixed



Castor-Plate-Brake



Description	Wheel Width (mm)	D (mm)	R (mm)	H (mm)	Load (N)	Mass (g)	Part No.
Castor-Thread-Universal	32	63	63	104	800	550	5.41.63.M12
		75	73	119	1050	670	5.41.75.M12
		100	87	142	1350	790	5.41.100.M12
Castor-Thread-Brake-Universal	32	63	112	104	800	650	5.41.63.M12B
		75	112	119	1050	770	5.41.75.M12B
		100	122	142	1350	930	5.41.100.M12B
Castor-Plate-Universal	32	63	63	92	800	570	5.41.63U
		75	73	107	1050	690	5.41.75U
		100	87	130	1350	870	5.41.100U
Castor-Plate-Fixed	32	63		92	800	370	5.41.63F
		75		107	1050	490	5.41.75F
		100		130	1350	670	5.41.100F
Castor-Plate-Brake	32	63	118	92	800	670	5.41.63B
		75	118	107	1050	790	5.41.75B
		100	127	130	1350	970	5.41.100B
Castor-Plate-Universal-Heavy	50	75	65	104	6000	1150	5.41.75UH
Castor-Plate-Fixed-Heavy	50	75		104	6000	950	5.41.75FH

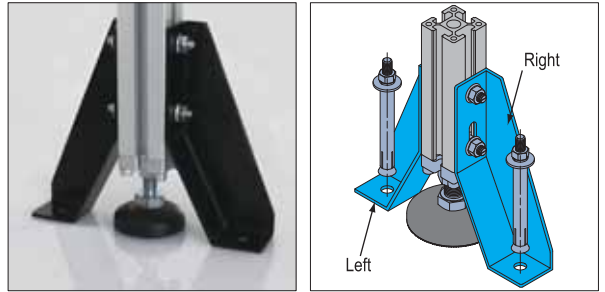


Floor Elements

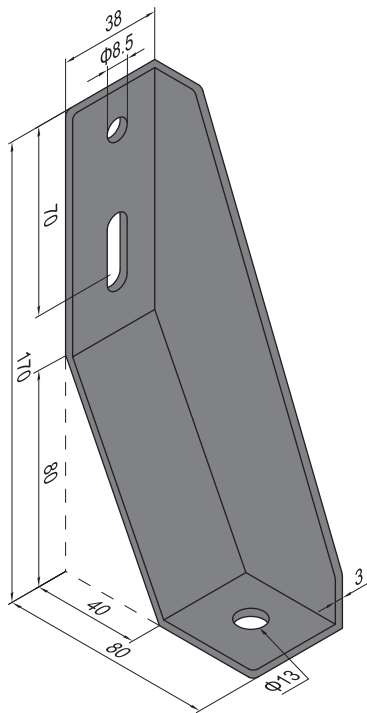
Base Angle

To improve stability of structure supported by leveling foot.

Material: steel, black electrophoresis



Base Angle-Left/Right



C	Fastening Set	AA	Fastening Set
	M8 Flange Nut zinc plated		M10x100 expansion bolt zinc plated
	M8x20 T Bolt nickel plated		

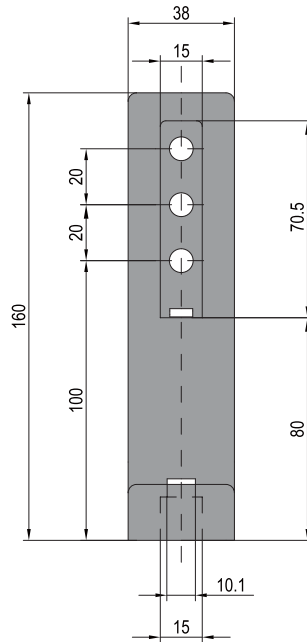
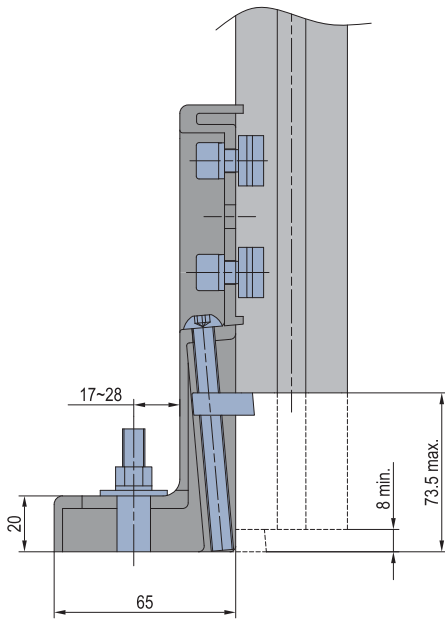
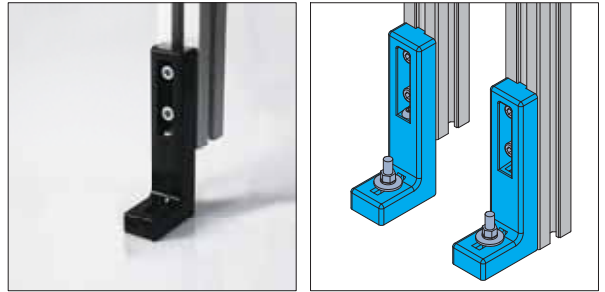
Description	Fastening Set	Mass (g)	Part No.
Base Angle-Left (pc)		346	5.51.L
Base Angle-Left (set)	2xC+1xAA	473	5.51.L.ST
Base Angle-Right (pc)		346	5.51.R
Base Angle-Right (set)	2xC+1xAA	473	5.51.R.ST
Base Angle-L+R (pair)		692	5.51.P
Base Angle-L+R (set)	4xC+2xAA	946	5.51.P.ST

Floor Elements

L Base **New!**

L base is to fix the profile on the floor and adjust the height of the profile to the floor.

Material: diecast aluminum, black electrophoresis



DI	Fastening Set	DM	Fastening Set	DN	Fastening Set
	M8x16 Bolt zinc plated		M8x20 Bolt zinc plated		M10x120 expansion bolt zinc plated
	M8 Spring Washer zinc plated		M8 Spring Washer zinc plated		
	M8 Pre-set Nut nickel plated		M8 Pre-set Nut nickel plated		

Description	Fastening Set	Mass (g)	Part No.
L Base (pcs)		276	5.52.10
L Base-PG40 (set)	2xDI+1xDN	343	5.52.10.04.ST
L Base-PG45 (set)	2xDM+1xDN	346	5.52.10.06.ST

Modular Assembly System

MAS

Machine Guard System

MGS

Stair and Platform System

SPS

Tubular Framing System

TFS



Floor Elements

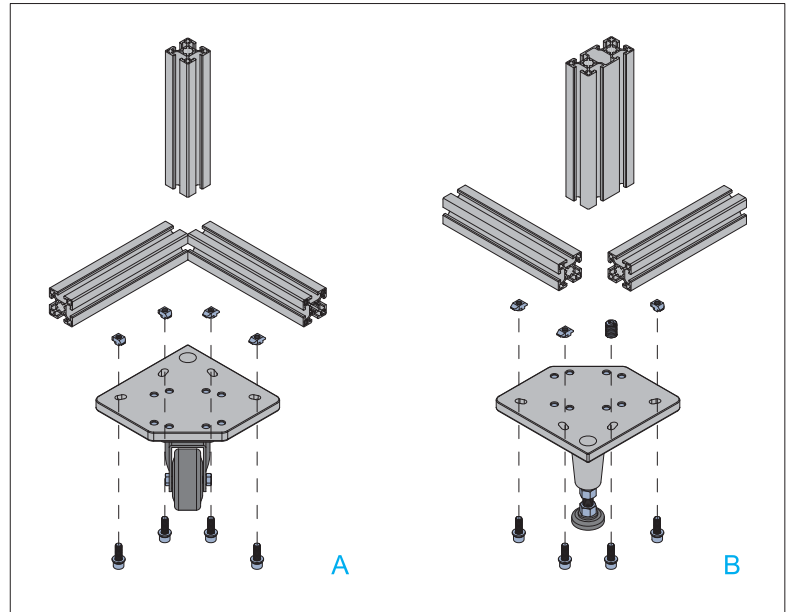
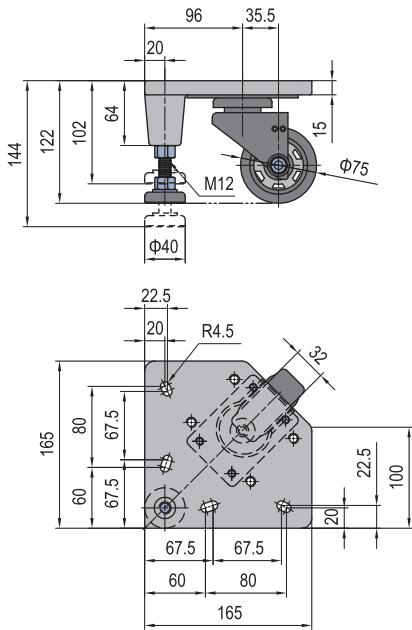
Foot and Castor Components



Material and Color: plate, cast steel, silver

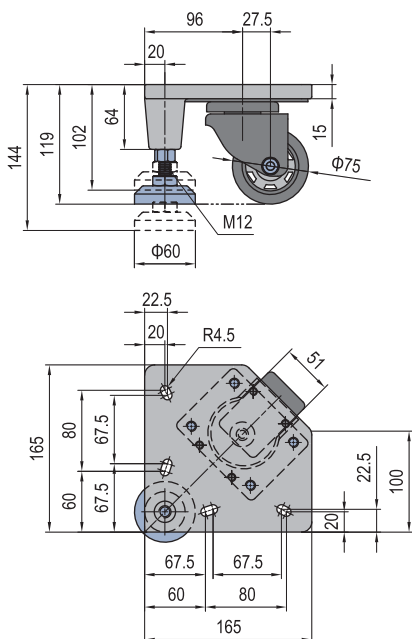


Light Wheel-polyurethane Foot-steel, black electrophoresis

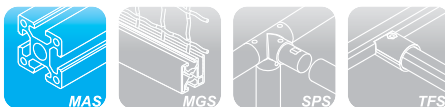


AF	Fastening Set	AG	Fastening Set	J	Fastening Set	W	Fastening Set
	M8x25 Bolt zinc plated		M8x30 Bolt zinc plated		M8x25 Bolt zinc plated		M8x30 Bolt zinc plated
	M8 Spring Washer zinc plated		M8 Spring Washer zinc plated		M8 Spring Washer zinc plated		M8 Spring Washer zinc plated
	M8 Washer zinc plated		M8 Washer zinc plated		M8 Washer zinc plated		M8 Washer zinc plated
	M14-M8 Hole Reducer Bolt nickel plated		M14-M8 Hole Reducer Bolt nickel plated		M8 T Nut nickel plated		M8 T Nut nickel plated

Heavy Wheel-PA Foot-zinc plated steel



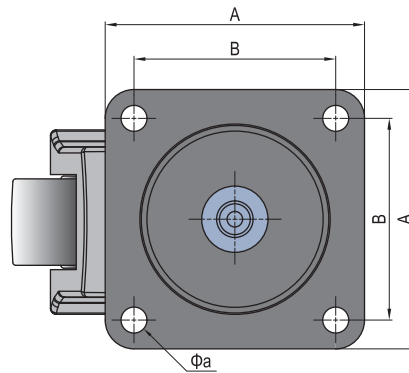
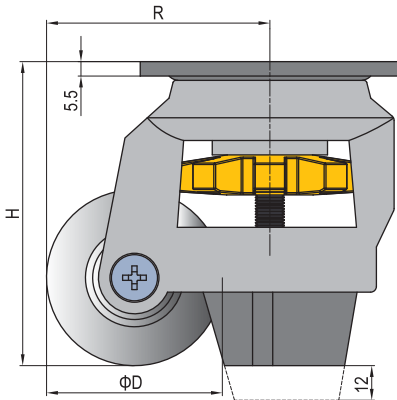
Description	Fastening Set	Load (N)	Mass (g)	Part No.
Light Weight		1050	3900	5.61.L
	4xJ		3950	5.61.40.L.STA
	3xJ+1xAF		3950	5.61.40.L.STB
	4xW		3950	5.61.45.L.STA
Heavy Weight	3xW+1xAG	6000	3950	5.61.45.L.STB
			4600	5.61.H
	4xJ		4650	5.61.40.H.STA
	3xJ+1xAF		4650	5.61.40.H.STB
	4xW		4650	5.61.45.H.STA
	3xW+1xAG	4650	5.61.45.H.STB	



Floor Elements

Leveling Castor **New!**

Material: Base-Carbon steel, Case-Aluminum, Wheel-Nylon 6



Description	Wheel Width (mm)	D (mm)	R (mm)	H (mm)	A (mm)	B (mm)	a (mm)	Load (N)	Mass (kg)	Part No.
Leveling Castor	25	50	61	85	74	57	7.2	2500	0.77	5.62.50
	30	61	77.5	105	90	70	9	5000	1.25	5.62.61
	33	75	89.5	118	95	70	11	10000	1.65	5.62.75

Modular Assembly System

MAS

Machine Guard System

MGS

Stair and Platform System

SPS

Tubular Framing System

TFS

